

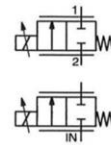
## PROPORTIONAL SOLENOID VALVES

### POSIFLOW

direct operated

1/4 - 3/8

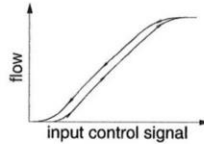
NC



2/2  
Series  
202

#### FEATURES

- Variable flow, proportional to the input control signal
- Valve do not require a minimum operating pressure
- Valves can be mounted in any position
- ASCO solenoid valves satisfy all relevant EC directives



#### GENERAL

Differential pressure  
Maximum viscosity

See "SPECIFICATIONS" [1 bar = 100 kPa]  
21 cSt (mm<sup>2</sup>/s)

fluids (*)	temperature range (TS) (2)	seal materials (*)
air, inert gas, water, oil	- 10°C to + 90°C	FPM (fluoroelastomer)

#### MATERIALS IN CONTACT WITH FLUID

(\*) Ensure that the compatibility of the fluids in contact with the materials is verified

	Brass body	Stainless steel body
Body	Brass	AISI 303 SS
Core tube	Stainless steel	Stainless steel
Core and plugnut	Stainless steel	Stainless steel
Springs	Stainless steel	Stainless steel
Riderring	PTFE	PTFE
Seat	Brass	Stainless steel
Seal, disc	FPM	FPM
Breaker piece	Stainless steel	Stainless steel

#### ELECTRICAL CHARACTERISTICS

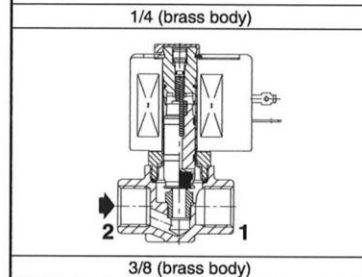
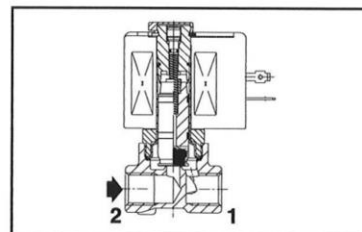
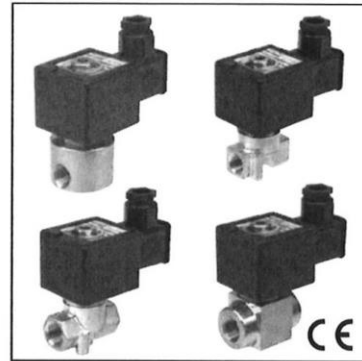
Coil insulation class: F  
Connector: Spade plug (cable Ø 6-10 mm)  
Connector specification: ISO 4400 / EN 175301-803, form A  
Electrical safety: IEC 335  
Electrical enclosure protection: Moulded IP65 (EN 60529)  
Standard voltages: DC (=) : 24V (other voltages on request)

prefix option	operating current (mA)	power ratings			operator ambient temperature ranges (TS) (2) (C°)	replacement coil =	type (1)
		inrush (VA)	holding (VA)	hot/cold (W)			
SC	100 - 500	-	-	11 / 8	-10 to + 75	400429-040	01

#### Voltage regulation

0 - 24 V DC  
24 V DC pulse width modulated (300 Hz)  
Hysteresis < 5 % ; Repeatability < 3 % ;  
Sensitivity < 2 %

#### Flow regulation characteristics (3)



#### SPECIFICATIONS

pipe size	orifice size (mm)	flow coefficient kv (m <sup>3</sup> /h) (l/min)	operating pressure differential (bar)				power coil (W)	catalogue number				options						
			min.	max. (PS)				brass (=)		stainless steel (=)		EPDM	CR	PTFE				
				vacuum	air, water, oil (*)	=		=	=	air / inert gas	liquids				air / inert gas	liquids		
<b>NC - Normally closed</b>																		
1/4	G NPT 1,2	0,05	0,8	0	1	16	8											
	G NPT 2,4	0,12	2	0	1	8	8	PV 2013	PV 2023									
	G NPT 3,2	0,24	4,0	0	1	4	8	PV 2014	PV 2024									
	G NPT 4,0	0,42	7,0	0	1	2,5	8											
	G NPT 5,6	0,72	12,0	0	1	1,4	8											
	G NPT 7,1	0,90	15,0	0	1	1	8											
3/8	Rp NPT 3,2	0,24	4,0	0	1	4	8											
	Rp NPT 4,0	0,42	7,0	0	1	2,5	8											
	Rp NPT 5,6	0,72	12,0	0	1	1,4	8	PV 2015	PV 2025									
	Rp NPT 7,1	0,90	15,0	0	1	1	8	PV 2016	PV 2026									

(1) Refer to the dimensional drawings on the following page.  
(2) Damage may occur when liquids solidify above the specified minimum temperature.  
(3) Percentage of max. value with 24 V DC, P.W.M. 300 Hz, supply at constant ΔP.

## PROPORTIONAL SOLENOID VALVES SERIES 202

### OPTIONS

- Valves can also be supplied with NBR (nitrile), EPDM (ethylene-propylene), CR (chloroprene / neoprene) and PTFE seals and discs
- Waterproof enclosure with embedded screw terminal coil according to protection class IP67, CEE-10
- Explosionproof enclosures for use in zones 1/21-2/22, categories 2-3 to ATEX Directive 94/9/EC, on request
- Electrical enclosures according to "NEMA" standards are available
- Mounting brackets
- Electronic proportional control unit
- Features:
  - input control signals, analog: 0 - 10 V DC, 0 - 20 mA or 4 - 20 mA
  - adjustable coil current
  - switch-off function at less than 2% of the maximum control function
  - adjustable ramp control
  - Adjustable frequency
  - output current independent of coil resistance and supply voltage variations
  - housed in: a box with spade plug connector according to ISO 4400 / IP65
- Other pipe connections are available on request

### INSTALLATION

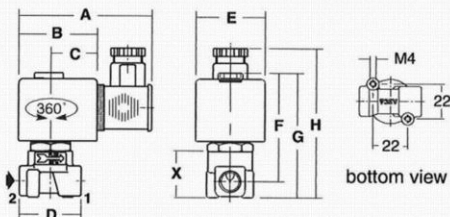
- The solenoid valves can be mounted in any position without affecting operation
- Brass and NPT 3/8 stainless steel solenoid valves have 2 mounting holes in body
- NPT 1/4 stainless steel valves are standard supplied with mounting brackets
- Threaded pipe connection is standard: E = Rp (ISO 7/1) ; G = G (ISO 228/1) ; B = NPT (ANSI 1.20.3)
- Installation/maintenance instructions are included with each valve

### DIMENSIONS (mm), WEIGHT (kg)

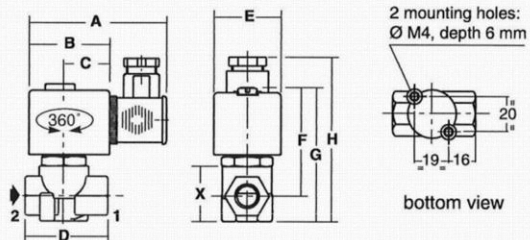


**TYPE 01**  
Prefix "SC" solenoid  
Epoxy moulded  
IEC 335 / ISO 4400  
IP65

PV 2013 / PV 2014 / PV 2023 / PV 2024



PV 2015 / PV 2016 / PV 2025 / PV 2026



Art. No.	Ident No.	Art. No.	Ident No.
PV 2013	101641	PV 2023	101645
PV 2014	101642	PV 2024	101646
PV 2015	101643	PV 2025	101647
PV 2016	101644	PV 2026	101648

type	prefix option	catalogue number	A	B	C	D	E	F	G	H	X	weight <sup>(1)</sup>
01	SC	PV 2013, PV 2014, PV 2023, PV 2024	85	50	30	40	45	68	79	95	30	0,50
		PV 2015, PV 2016, PV 2025, PV 2026	85	50	30	48	45	68	82	97	32	0,50

<sup>(1)</sup> Including coil and connector.